

# Social Change and Educational Outcomes: 1980-2000 Harold G. Shane

Social changes of the next two decades—and their educational consequences—will have so great a worldwide impact that they no longer can be considered in the narrow context of a single nation. Because social change greatly transcends national borders, education, too, needs to become more transnational. And because of the overspill of knowledge in a given field of learning, education needs to become much more transdisciplinary than it heretofore has been.

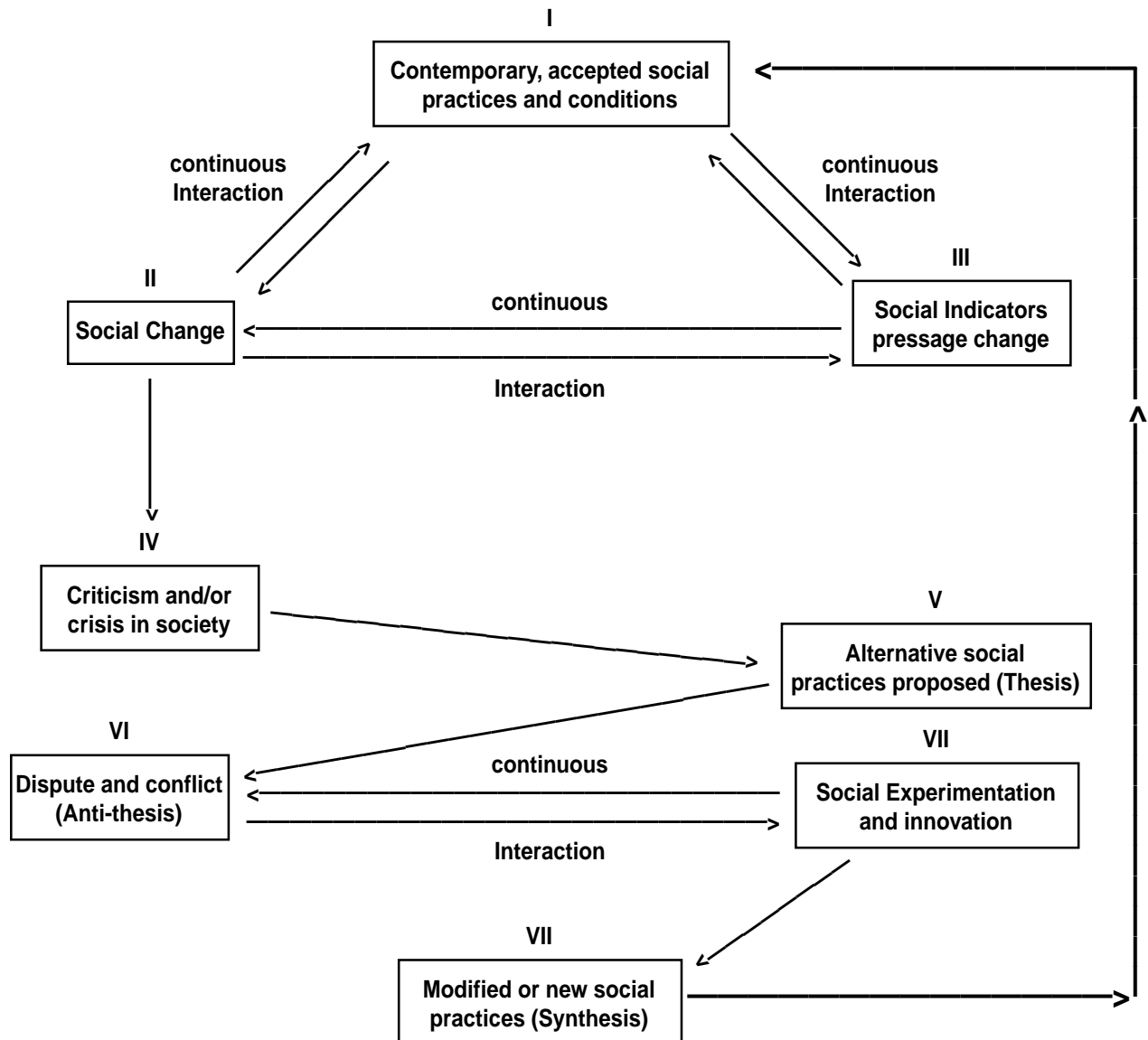


Figure 1

## A Model Illustrating Evolving Social Change Processes

SOURCE: Designed by Harold G. Shane, Indiana University, Bloomington.